

key

- Growth Centre Boundary
- Growth Centre Precinct Boundary
- Probable Maximum Flood Level

Proposed Dwelling Density Ranges (per hectare)

North Kellyville

- K 10-15
- O3 15-35
- Q1 20-100

Box Hill and Box Hill Industrial

- C 5
- O 15-20
- O2 15-30
- Q 20-80
- U 30-100

Blacktown Precincts

- L 11
- O 15-20
- O1 15-25
- T 25-35
- V 35-55
- Z 55-100



Cadastre © NSW LPI 19/05/2017

Proposed Residential Density Ranges - North West Priority Land Release Area

Disclaimer: The information contained on this map is, to the best of the Government's knowledge, correct. However, no warranty or guarantee is provided by the Government and no liability is accepted for any loss or damage resulting from any person relying upon or using the information contained in the map.

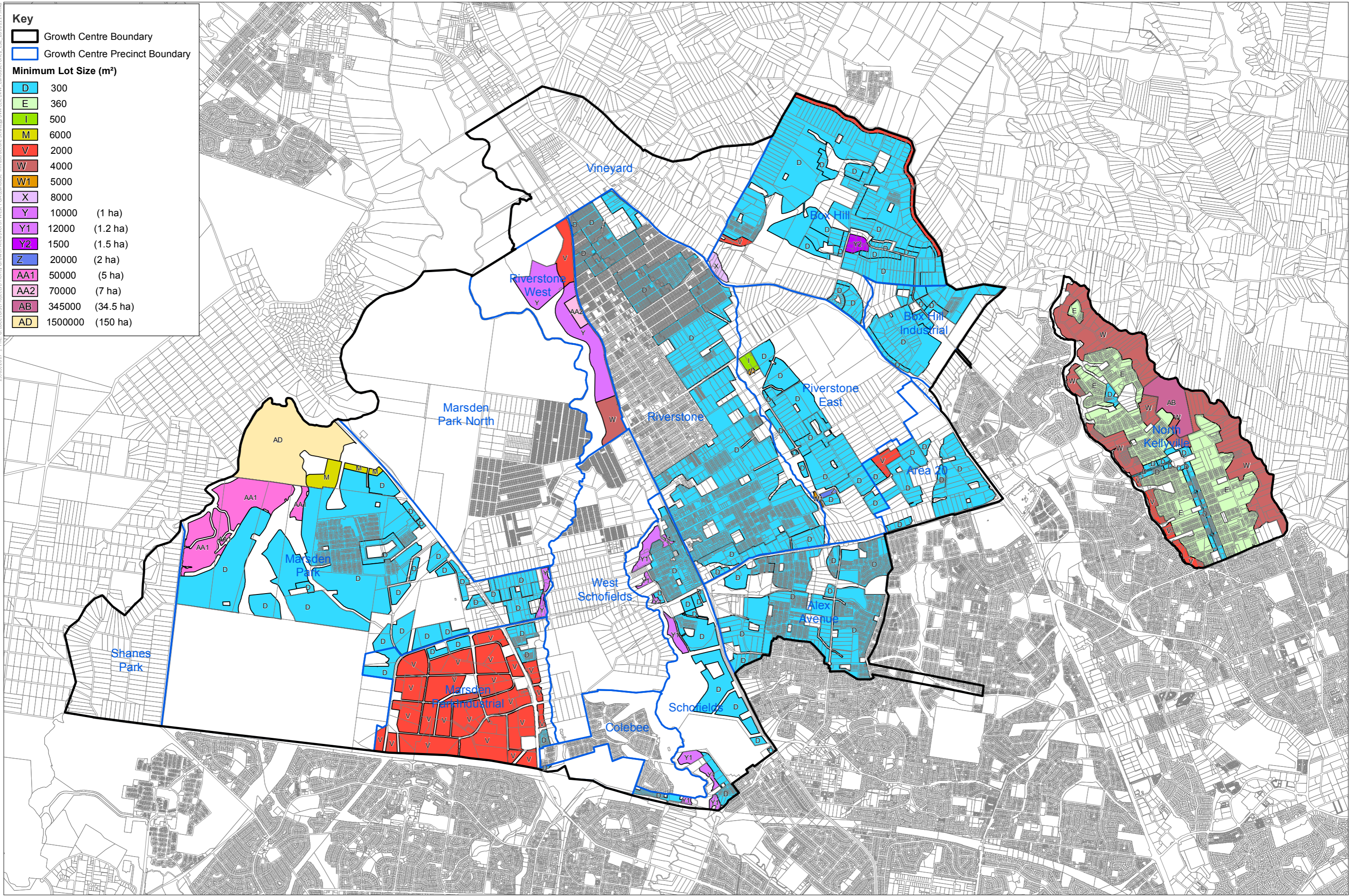


Key

- Growth Centre Boundary
- Growth Centre Precinct Boundary

Minimum Lot Size (m²)

D	300
E	360
I	500
M	6000
V	2000
W	4000
W1	5000
X	8000
Y	10000 (1 ha)
Y1	12000 (1.2 ha)
Y2	1500 (1.5 ha)
Z	20000 (2 ha)
AA1	50000 (5 ha)
AA2	70000 (7 ha)
AB	345000 (34.5 ha)
AD	1500000 (150 ha)



Key

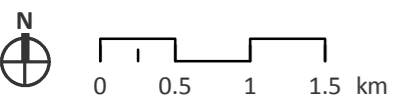
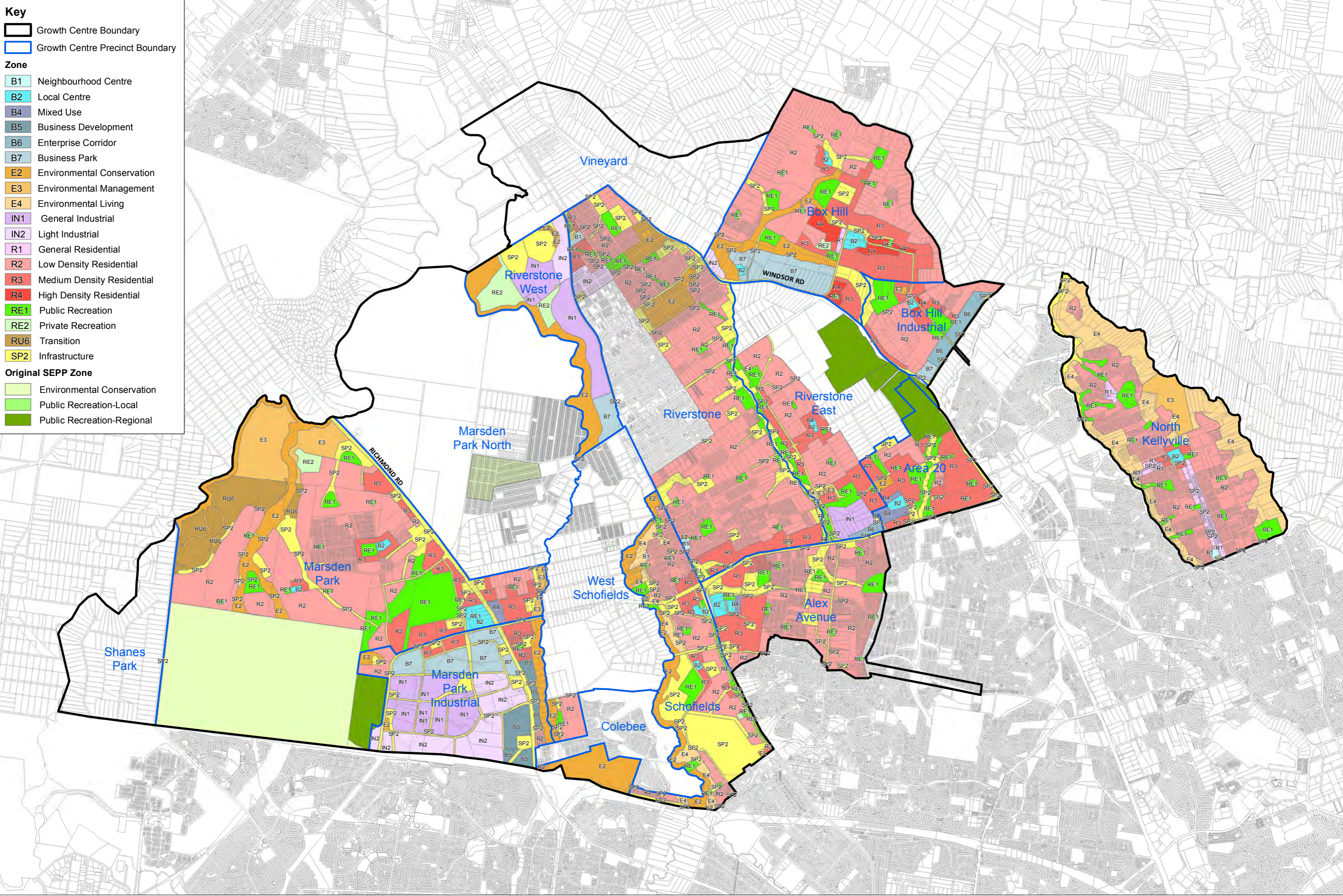
- Growth Centre Boundary
- Growth Centre Precinct Boundary

Zone

- B1 Neighbourhood Centre
- B2 Local Centre
- B4 Mixed Use
- B5 Business Development
- B6 Enterprise Corridor
- B7 Business Park
- E2 Environmental Conservation
- E3 Environmental Management
- E4 Environmental Living
- IN1 General Industrial
- IN2 Light Industrial
- R1 General Residential
- R2 Low Density Residential
- R3 Medium Density Residential
- R4 High Density Residential
- RE1 Public Recreation
- RE2 Private Recreation
- RU6 Transition
- SP2 Infrastructure

Original SEPP Zone

- Environmental Conservation
- Public Recreation-Local
- Public Recreation-Regional

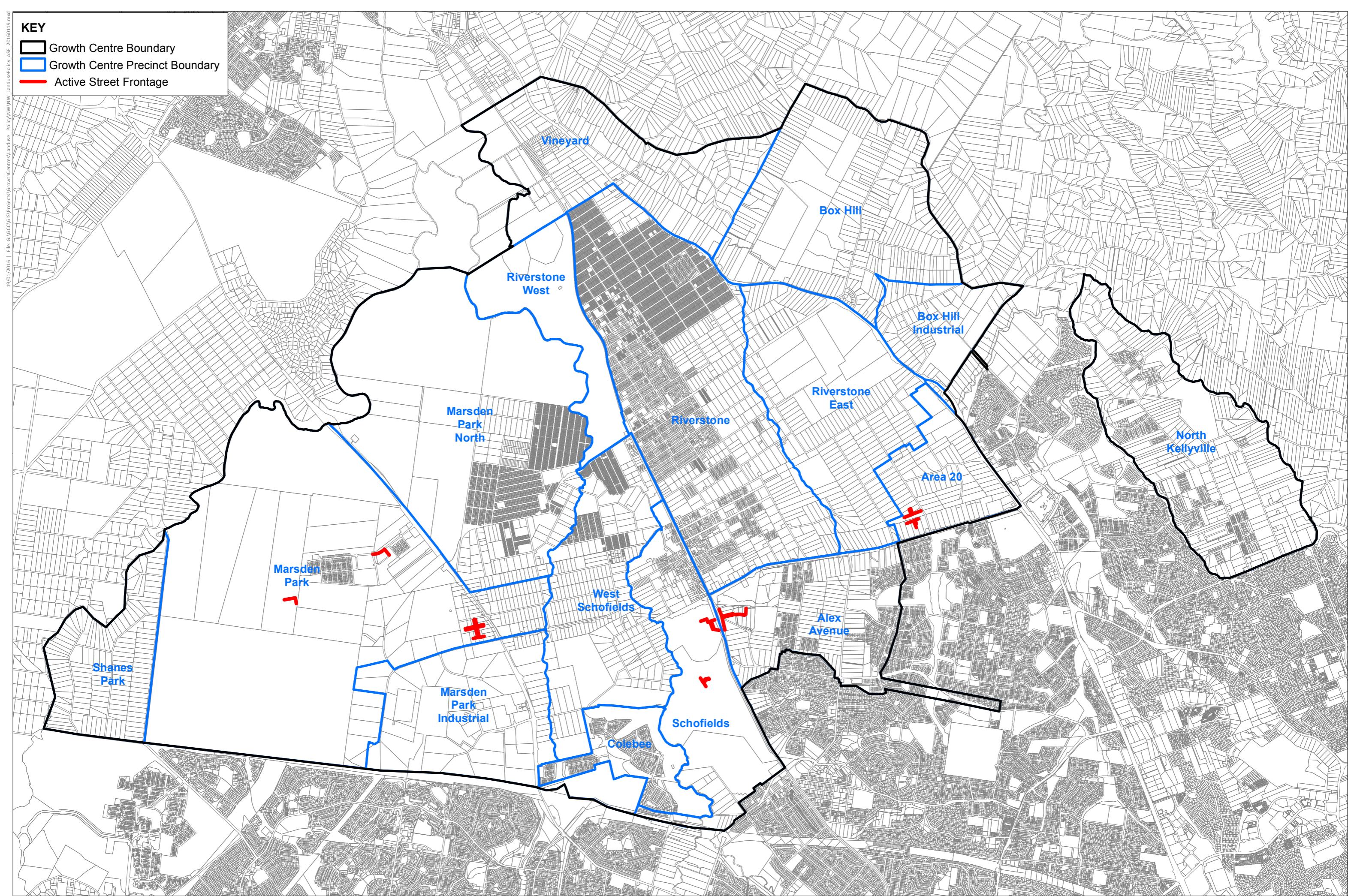


Cadastre © NSW LPI 18/05/2017

Proposed Land Zoning - North West Priority Land Release Area

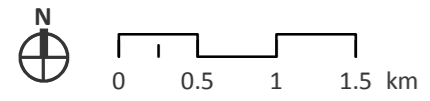
Disclaimer: The information contained on this map is, to the best of the Government's knowledge, correct. However, no warranty or guarantee is provided by the Government and no liability is accepted for any loss or damage resulting from any person relying upon or using the information contained in the map.





KEY

- Growth Centre Boundary
- Growth Centre Precinct Boundary
- Active Street Frontage

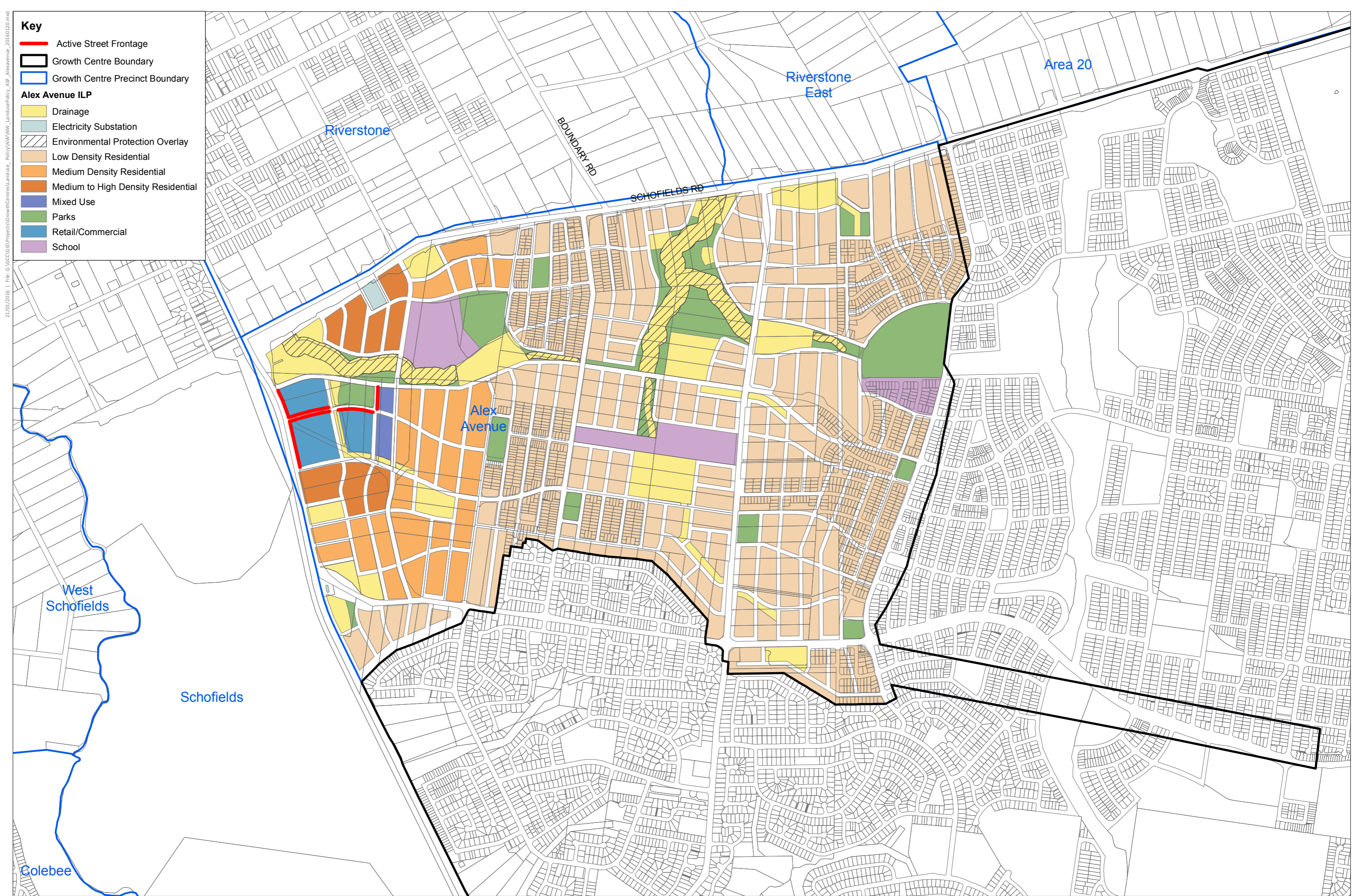


Cadastre © NSW LPI 19/01/2016

Proposed Active Street Frontage - North West Priority Land Release Area

Disclaimer: The information contained on this map is, to the best of the Government's knowledge, correct. However, no warranty or guarantee is provided by the Government and no liability is accepted for any loss or damage resulting from any person relying upon or using the information contained in the map.



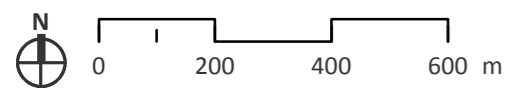


Key

- Active Street Frontage
- Growth Centre Boundary
- Growth Centre Precinct Boundary

Alex Avenue ILP

- Drainage
- Electricity Substation
- Environmental Protection Overlay
- Low Density Residential
- Medium Density Residential
- Medium to High Density Residential
- Mixed Use
- Parks
- Retail/Commercial
- School



Cadastre © NSW LPI 21/01/2016

Proposed Active Street Frontage - Alex Avenue Precinct

Disclaimer: The information contained on this map is, to the best of the Government's knowledge, correct. However, no warranty or guarantee is provided by the Government and no liability is accepted for any loss or damage resulting from any person relying upon or using the information contained in the map.

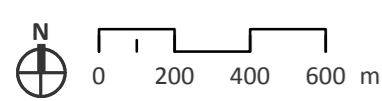
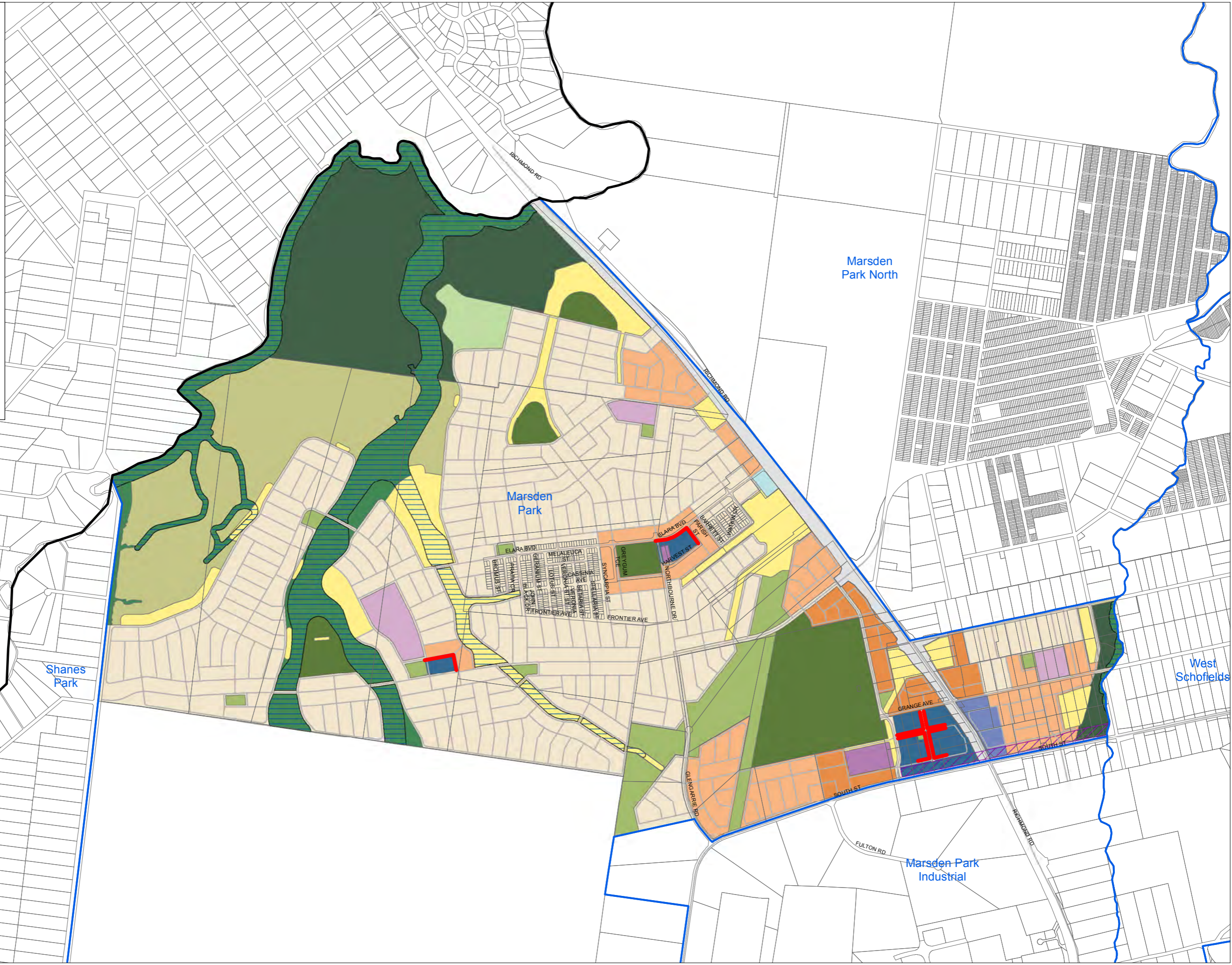


Key

- Active Street Frontage
- Growth Centre Boundary
- Growth Centre Precinct Boundary

Marsden Park ILP

- Low Density Residential
- Medium Density Residential
- High Density Residential
- Retail Centre
- Indicative School Site
- Community Use
- Mixed-use Zone
- Transition
- Sporting Field
- Local Park
- Private Open Space (Clydesdale Estate)
- Environmental Conservation
- Environmental Management
- Riparian Corridor
- Water Management
- Transmission Easement
- Transport Corridor
- Substation Site
- Roads



Cadastre © NSW LPI 21/01/2016

Proposed Active Street Frontage - Marsden Park Precinct

Disclaimer: The information contained on this map is, to the best of the Government's knowledge, correct. However, no warranty or guarantee is provided by the Government and no liability is accepted for any loss or damage resulting from any person relying upon or using the information contained in the map.

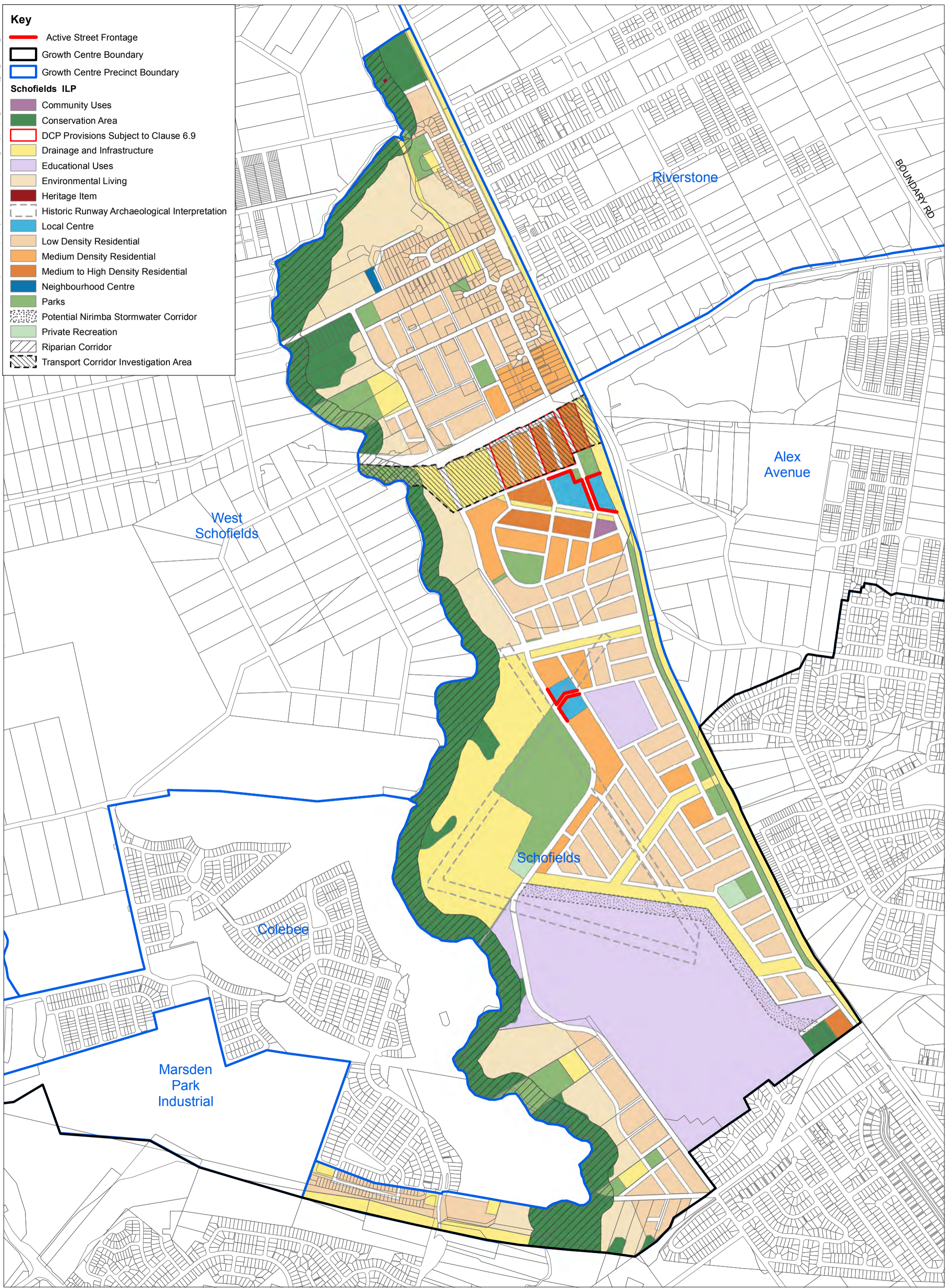


Key

- Active Street Frontage
- Growth Centre Boundary
- Growth Centre Precinct Boundary

Schofields ILP

- Community Uses
- Conservation Area
- DCP Provisions Subject to Clause 6.9
- Drainage and Infrastructure
- Educational Uses
- Environmental Living
- Heritage Item
- Historic Runway Archaeological Interpretation
- Local Centre
- Low Density Residential
- Medium Density Residential
- Medium to High Density Residential
- Neighbourhood Centre
- Parks
- Potential Nimba Stormwater Corridor
- Private Recreation
- Riparian Corridor
- Transport Corridor Investigation Area



Proposed Active Street Frontage - Schofields Precinct

Disclaimer: The information contained on this map is, to the best of the Government's knowledge, correct. However, no warranty or guarantee is provided by the Government and no liability is accepted for any loss or damage resulting from any person relying upon or using the information contained in the map.